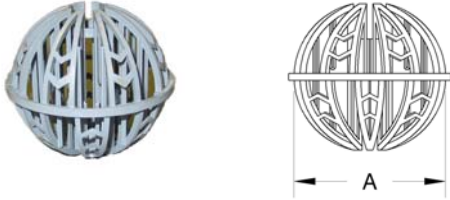
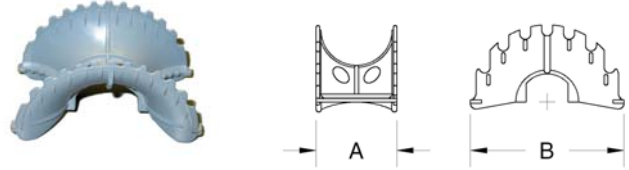


# FILTRATION MEDIA

## TRIPACK SPHERICAL PACKING:



## TRANSFERLOX SADDLE PACKING:

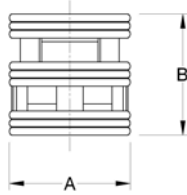


SIZE	PART NO.	MAT.	DIM. A	SP/MC	SIZE	PART NO.	MAT.	DIM. A	DIM. B	SP/MC
2"	901020	P. P.	1.79	10 ft <sup>3</sup> /Box	1"	918010	P. P.	1.00	1.72	5 ft <sup>3</sup> /Box
3-1/2"	901040	P. P.	3.46	10 ft <sup>3</sup> /Box	2"	918020	P. P.	1.93	3.64	5 ft <sup>3</sup> /Box
2"	901020GF20	PPG20	1.79	10 ft <sup>3</sup> /Box	3"	918030	P. P.	3.10	6.27	10 ft <sup>3</sup> /Box
3-1/2"	901040GF20	PPG20	3.46	10 ft <sup>3</sup> /Box	1"	919010	PPG20	1.00	1.72	5 ft <sup>3</sup> /Box
2"	901020GF30	PPG30	1.79	10 ft <sup>3</sup> /Box	2"	919020	PPG20	1.93	3.64	5 ft <sup>3</sup> /Box
3-1/2"	901040GF30	PPG30	3.46	10 ft <sup>3</sup> /Box	3"	919030	PPG20	3.10	6.27	10 ft <sup>3</sup> /Box
2"	902020	P. E.	1.79	10 ft <sup>3</sup> /Box	1"	920010	P. E.	1.00	1.72	5 ft <sup>3</sup> /Box
3-1/2"	902040	P. E.	3.46	10 ft <sup>3</sup> /Box	2"	920020	P. E.	1.93	3.64	5 ft <sup>3</sup> /Box
2"	903020	CPVC	1.79	5 ft <sup>3</sup> /Box	3"	920030	P. E.	3.10	6.27	10 ft <sup>3</sup> /Box
3-1/2"	903040	CPVC	3.46	5 ft <sup>3</sup> /Box	1"	921010	PVC	1.00	1.72	5 ft <sup>3</sup> /Box
2"	904020	PVDF	1.79	5 ft <sup>3</sup> /Box	2"	921020	PVC	1.93	3.64	5 ft <sup>3</sup> /Box
3-1/2"	904040	PVDF	3.46	5 ft <sup>3</sup> /Box	3"	921030	PVC	3.10	6.27	10 ft <sup>3</sup> /Box
2"	905020	PVC	1.79	5 ft <sup>3</sup> /Box	1"	922010	CPVC	1.00	1.72	5 ft <sup>3</sup> /Box
3-1/2"	905040	PVC	3.46	5 ft <sup>3</sup> /Box	2"	922020	CPVC	1.93	3.64	5 ft <sup>3</sup> /Box
2"	906020	TEFZEL	1.79	5 ft <sup>3</sup> /Box	3"	922030	CPVC	3.10	6.27	10 ft <sup>3</sup> /Box
3-1/2"	906040	TEFZEL	3.46	5 ft <sup>3</sup> /Box	1"	923010	PVDF	1.00	1.72	5 ft <sup>3</sup> /Box
2"	907020	HALAR	1.79	5 ft <sup>3</sup> /Box	2"	923020	PVDF	1.93	3.64	5 ft <sup>3</sup> /Box
3-1/2"	907040	HALAR	3.46	5 ft <sup>3</sup> /Box	3"	923030	PVDF	3.10	6.27	10 ft <sup>3</sup> /Box
2"	908020	TEFZEL GF	1.79	5 ft <sup>3</sup> /Box	1"	924010	HALAR	1.00	1.72	5 ft <sup>3</sup> /Box
3-1/2"	908040	TEFZEL GF	3.46	5 ft <sup>3</sup> /Box	2"	924020	HALAR	1.93	3.64	5 ft <sup>3</sup> /Box
2"	909020	NORYL GF	1.79	5 ft <sup>3</sup> /Box	3"	924030	HALAR	3.10	6.27	10 ft <sup>3</sup> /Box
3-1/2"	909040	NORYL GF	3.46	5 ft <sup>3</sup> /Box	1"	925010	TFZEL GF	1.00	1.72	5 ft <sup>3</sup> /Box
2"	915020	PFA AUSIMONT	1.79	5 ft <sup>3</sup> /Box	2"	925020	TFZEL GF	1.93	3.64	5 ft <sup>3</sup> /Box
3-1/2"	915040	PFA AUSIMONT	3.46	5 ft <sup>3</sup> /Box	3"	925030	TFZEL GF	3.10	6.27	10 ft <sup>3</sup> /Box
					1"	926010	PFA AUSIMONT	1.00	1.72	5 ft <sup>3</sup> /Box
					2"	926020	PFA AUSIMONT	1.93	3.64	5 ft <sup>3</sup> /Box
					3"	926030	PFA AUSIMONT	3.10	6.27	10 ft <sup>3</sup> /Box

# FILTRATION MEDIA

## REPACK SPHERICAL PACKING:

(Continue):



SIZE	PART NO.	MAT.	DIM. A	DIM. B	SP/MC
1"	968010	P. P.	1.00	1.01	5 ft <sup>3</sup> /Box
2"	968020	P. P.	2.05	2.05	5 ft <sup>3</sup> /Box
3-1/2"	968035	P. P.	3.42	3.41	10 ft <sup>3</sup> /Box
1"	969010 GF20	PPG20	1.00	1.01	5 ft <sup>3</sup> /Box
2"	969020 GF20	PPG20	2.05	2.05	5 ft <sup>3</sup> /Box
3-1/2"	969035 GF20	PPG20	3.42	3.41	10 ft <sup>3</sup> /Box
1"	969010 GF30	PPG30	1.00	1.01	5 ft <sup>3</sup> /Box
2"	969020 GF30	PPG30	2.05	2.05	5 ft <sup>3</sup> /Box
3-1/2"	969035 GF30	PPG30	3.42	3.41	10 ft <sup>3</sup> /Box
1"	970010	P. E.	1.00	1.01	5 ft <sup>3</sup> /Box
2"	970020	P. E.	2.05	2.05	5 ft <sup>3</sup> /Box
3-1/2"	970035	P. E.	3.42	3.41	10 ft <sup>3</sup> /Box
1"	971010	PVC	1.00	1.01	5 ft <sup>3</sup> /Box
2"	971020	PVC	2.05	2.05	5 ft <sup>3</sup> /Box
3-1/2"	971035	PVC	3.42	3.41	10 ft <sup>3</sup> /Box
1"	972010	CPVC	1.00	1.01	5 ft <sup>3</sup> /Box
2"	972020	CPVC	2.05	2.05	5 ft <sup>3</sup> /Box
3-1/2"	972035	CPVC	3.42	3.41	10 ft <sup>3</sup> /Box
1"	973010	PVDF	1.00	1.01	5 ft <sup>3</sup> /Box
2"	973020	PVDF	2.05	2.05	5 ft <sup>3</sup> /Box
3-1/2"	973035	PVDF	3.42	3.41	10 ft <sup>3</sup> /Box
1"	974010	HALAR	1.00	1.01	5 ft <sup>3</sup> /Box
2"	974020	HALAR	2.05	2.05	5 ft <sup>3</sup> /Box
3-1/2"	974035	HALAR	3.42	3.41	10 ft <sup>3</sup> /Box
1"	975010	TEFZEL	1.00	1.01	5 ft <sup>3</sup> /Box
2"	975020	TEFZEL	2.05	2.05	5 ft <sup>3</sup> /Box
3-1/2"	975035	TEFZEL	3.42	3.41	10 ft <sup>3</sup> /Box

SIZE	PART NO.	MAT.	DIM. A	DIM. B	SP/MC
1"	975010 GF	TEFZELGF	1.00	1.01	5 ft <sup>3</sup> /Box
2"	975020 GF	TEFZELGF	2.05	2.05	5 ft <sup>3</sup> /Box
3-1/2"	975035 GF	TEFZELGF	3.42	3.41	10 ft <sup>3</sup> /Box
1"	976010	PFA AUSIMONT	1.00	1.01	5 ft <sup>3</sup> /Box
2"	976020	PFA AUSIMONT	2.05	2.05	5 ft <sup>3</sup> /Box
3-1/2"	976035	PFA AUSIMONT	3.42	3.41	10 ft <sup>3</sup> /Box