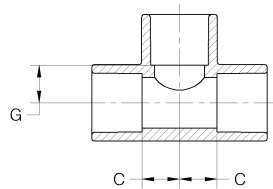


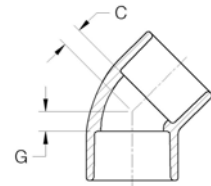
PVC S-40 FITTINGS

TEE SOC x SOC x SOC



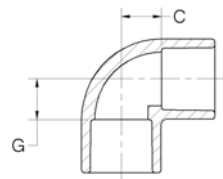
SIZE	PART NO.	DIM. C	DIM. G	SP/MC
1/2"	401005W	0.50	0.50	100/400
3/4"	400107W	0.57	0.57	60/240
1"	401010W	0.82	0.82	30/120
1-1/4"	401012W	0.89	0.89	50
1-1/2"	401015W	1.00	1.00	35
2"	401020W	1.25	1.25	50
2-1/2"	401025W	1.56	1.56	10
3"	401030W	1.84	1.84	20
4"	401040W	2.35	2.35	5
6"	401060W	3.77	3.77	3

45° ELBOW SOC x SOC



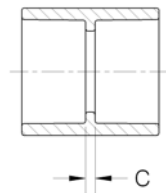
SIZE	PART NO.	DIM. C	DIM. G	SP/MC
1/2"	417005W	0.25	0.25	75/600
3/4"	417007W	0.32	0.32	50/400
1"	417010W	0.32	0.32	50/200
1-1/4"	417012W	0.38	0.38	35/140
1-1/2"	417015W	0.44	0.44	35/140
2"	417020W	0.63	0.63	50
2-1/2"	417025W	0.69	0.69	13
3"	417030W	0.75	0.75	25
4"	417040W	1.00	1.00	15
6"	417060W	1.75	1.75	4

90° ELBOW SOC x SOC



SIZE	PART NO.	DIM. C	DIM. G	SP/MC
1/2"	406005W	0.50	0.50	100/600
3/4"	406007W	0.57	0.57	60/260
1"	406010W	0.69	0.69	50/200
1-1/4"	406012W	0.88	0.88	25/100
1-1/2"	406015W	1.00	1.00	25/100
2"	406020W	1.25	1.25	80
2-1/2"	406025W	1.51	1.51	16
3"	406030W	1.81	1.81	20
4"	406040W	2.34	2.34	12
6"	406060W	3.63	3.63	4

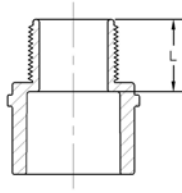
COUPLING SOC x SOC



SIZE	PART NO.	DIM. C	SP/MC
1/2"	429005W	0.10	100/800
3/4"	429007W	0.10	70/560
1"	429010W	0.10	50/300
1-1/4"	429012W	0.11	50/200
1-1/2"	429015W	0.11	35/140
2"	429020W	0.11	50
2-1/2"	429025W	0.19	33
3"	429030W	0.19	35
4"	429040W	0.19	24
6"	429060W	0.25	6

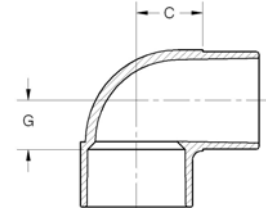
PVC S-40 FITTINGS

MALE ADAPTER SOC x MNPT



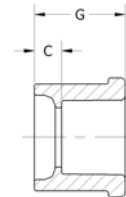
SIZE	PART NO.	DIM. L	SP/MC
1/2"	436005W	0.92	100/400
3/4"	436007W	0.96	80/640
1"	436010W	1.19	40/320
1-1/4"	436012W	1.06	25/200
1-1/2"	436015W	1.38	50/200
2"	436020W	1.12	25/100
2-1/2"	436025W	1.84	30
3"	436030W	1.94	10/40
4"	436040W	1.86	5/20

90° STREET ELBOW SOC x SP



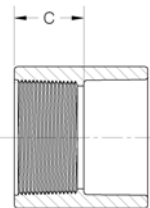
SIZE	PART NO.	DIM. C	DIM. G	SP/MC
1/2"	409005W	0.68	0.49	100/800
1"	409010W	0.84	0.57	70/280
1-1/2"	409015W	1.30	0.98	20/80
2"	409020W	1.59	1.19	20

REDUCE BUSHING SPG x SOC



SIZE	PART NO.	DIM. C	DIM. G	SP/MC
3/4" x 1/2"	437101W	0.24	1.14	100/400
1" x 1/2"	437130W	0.52	1.39	50/200
1" x 3/4"	437131W	0.27	1.27	50/200
1-1/2" x 3/4"	437210W	0.59	1.62	20/80
1-1/2" x 1"	437211W	0.55	1.63	20/80
2" x 1"	437249W	0.66	1.80	20/160
2" x 1-1/2"	437251W	0.29	1.64	20/160
3" x 1-1/2"	437337W	0.95	2.41	8/64
3" x 2"	437338W	0.93	2.42	8/64
4" x 2"	437420W	1.27	2.78	9/36
4" x 3"	437422W	0.91	2.79	9/36
6" x 4"	437532W	0.78	3.02	4
8" x 6"	437585W			3

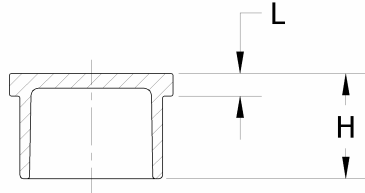
FEMALE ADAPTER SOC x FNPT



SIZE	PART NO.	DIM. C	SP/MC
1/2"	435005W	1.11	100/400
3/4"	435007W	1.26	40/320
1"	435010W	1.40	50/200
1-1/4"	435012W	1.49	25/150
1-1/2"	435015W	1.57	25/100
2"	435020W	1.91	15/60
2-1/2"	435025W	1.94	33
3"	435030W	2.06	35
4"	435040W	2.19	24

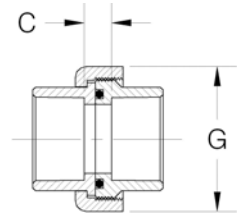
PVC S-40 PLUGS, CAPS & UNION

PLUG SPG



SIZE	PART NO.	DIM. H	DIM. L	SP/MC
1/2"	449005W	0.15	0.82	200/800
1"	449010W	0.25	1.23	100/800
1-1/2"	449015W	0.34	1.64	25/200
2"	449020W	0.37	1.72	100

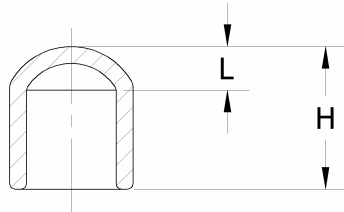
UNION SOC (1-1/2") x SOC (1-1/2") SPG (2") x SPG (2")



SIZE	PART NO.	DIM. C	DIM. G	SP/MC
1-1/2"	497015WN	0.56	3.35	10/60

1" S-40 REVERSE PLUG

CAP SOC



PART NO. 949010W
SP/MC 100/800

SIZE	PART NO.	DIM. H	DIM. L	SP/MC
1/2"	447005W	1.07	0.25	100/400
3/4"	447007W	1.37	0.28	100/800
1"	447010W	1.53	0.42	100/600
1-1/4"	447012W	1.77	0.38	25/100
1-1/2"	447015W	1.75	0.32	25/200
2"	447020W	1.87	0.34	50

1-1/2" SOC TEE (CUSTOM)



PART NO 401015T
SP/MC 100